

# The LYDDEN



Issue 548 August 2020



For the Parish of  
LYDDINGTON and WANBOROUGH

In the United Benefice of Lyddington, Wanborough, Bishopstone and Hinton Parva



## The beauty of wood without the hassle

This traditional timber look window range, manufactured from low maintenance PVCu, has a grained wood effect finish. Available in a wide range of colours, a combination of classic styling and modern materials makes it ideal for timber replacement in a conservation area.

- Reduce energy bills
- Six point high security locking
- Reduce condensation
  - No painting
- Double or triple glazed
- 10 year insurance backed guarantee

Also available, composite doors with the look and strength of timber doors but with no maintenance. Top security claw locking systems fitted as standard.

For all your double glazing windows, doors and patio doors telephone us now for a free no obligation quote from a trusted company with over 20 years trading.



DA Windows and Doors  
High St | Wanborough  
01793 790754



**Nationwide**  
PROPERTY LETTINGS

One of the longest established letting agents in the county who bring you experience with a modern approach & unrivalled property expertise and marketing knowledge.

Call Gary Sumner on 01793 513130



[www.nationwidepropertylettings.com](http://www.nationwidepropertylettings.com)

# Sell your Home

*for just*

**1%**



+VAT

**Contact us today on 01793 641 641  
to arrange a free valuation!**

**PRIMARY**  
Tel: 01793 641 641

**HOMES  
& LETTINGS**



*Your local family run business*



## Vicar's Letter

*Dear Friends and Neighbours,*

The whole of the Christian story is built on a Cornerstone of hospitality and welcome. Where care is called to be more important than being right. It's precisely why God the Son came to pay for our misdemeanour's. This was God's way of demonstrating that caring for each and every one of us is so much more important than being right. That in God's eyes, everyone has the opportunity to measure up. Very importantly it is God and God alone Who does the measuring. As soon as we start measuring another, we are setting ourselves up to be measured at least as severely.

Interesting to note that it was a school teenager that had a significant hand in determining just how many guns were fitted to the Spitfire during the Second World War. If she hadn't, the Battle of Britain would have had an entirely different outcome. The runt of a litter called Joseph got a technicolour dream coat and went on to save his father's people from starvation. A shepherd boy called David went on to be one of Israel's greatest Kings and time and time again God's choices have confounded human wisdom.

The thing is, God loves us despite our natural flair for getting things wrong. And this is exactly how we too are called to live. Loving each other despite our natural flair for getting things wrong. Loving especially, those we struggle with. Strange behaviour happens in strange times and I don't think that many will dispute that there have never been times as strange as these. It was not unusual for parents of children in Paediatric Intensive Care Units to be the most polite, gentle people on the planet, until their child started to get better!!!

Suddenly and without warning, we would be hit by a barrage of bad language and inadequate behaviour. It was as if their internal safety valve was letting off steam. We read that domestic violence is on the increase and a third of victims are men. Perhaps remembering that care is more important than being right might help us all when we are feeling a little less than ourselves.

At the start of lockdown, and with the ban on hairdressers, I opened a competition to clergy. Winners would be chosen for the nearest Old Testament Prophet Lookalike and for the vicar that looks as though they should have been in the Orthodox Church in the first place. It might be fun to see pictures of some of our Lockdown haircuts in our magazines. Stay safe.



*With best wishes and prayers,*

*Bill*

If you have anything that you would like our village prayer group to pray for please telephone 790088 or email [villageprayers@gmail.com](mailto:villageprayers@gmail.com)

## Church Services News

After many weeks of closure due to the pandemic, and following discussions with both the worshipping community and members of the PCCs, we are carefully opening our beautiful churches one by one. This wonderful opportunity for worship and private prayer has to be guided by medical advice, together with Government and Church of England guidance, for the health and the safety of us all. I will take this opportunity to say a huge personal thank you to all who have helped clean and prepare the churches in readiness for this. The churches are being set out to provide 2 metre social distancing between households, church bibles and hymn books have been removed and hand gel is provided. Service sheets (which you take home with you afterwards) will be provided for each service. Sadly, we are not allowed to sing in church at this time.

There is also a change in how we may currently share Holy Communion. Although we are unable to open for some of our usual services we are resuming as many of them as possible. While we are not able to hold services at 8:30 am and 6 pm on Sundays, our 10:30 am service will continue to rotate around the Benefice as per the previous rota. Our midweek Eucharist will remain at St Andrew's on Wednesday evenings at 7 pm.

As we currently have to keep a record of those who have visited our churches for up to twenty-one days after their visit, we are unable to open St Swithun's and St Mary's from dawn until dusk. To offer an opportunity for some quiet time, St. Marys and St Swithun's will be open on alternate Tuesday evenings between 6pm and 7pm. This will also be an opportunity for Holy Communion if requested by those who are able to join us. As our two services entitled "A Little Eucharist..." (recorded on a Sunday and Wednesday and available on YouTube) have been so warmly welcomed, particularly by those shielding or unable to get to church because of work commitments, they will continue.

### Church Services August 2020

Sunday 2 August	10.30	Family Communion	Liddington
Tuesday 4 August	18.00		Bishopstone
Wednesday 5 August	19.00	Midweek Communion	Wanborough
Sunday 9 August	10.30	Family Communion	Bishopstone
Tuesday 11 August	18.00		Hinton Parva
Wednesday 12 August	19.00	Midweek Communion	Wanborough
Sunday 16 August	10.30	Family Communion	Wanborough
Tuesday 18 August	18.00		Bishopstone
Wednesday 19 August	19.00	Midweek Communion	Wanborough
Sunday 23 August	10.30	Family Communion	Hinton Parva
Tuesday 25 August	18.00		Hinton Parva
Wednesday 26 August	19.00	Ash Wednesday	Wanborough
Sunday 30 August	-----	No Service	No Service

## Wanborough Farmers' Market



We are sorry we had to cancel the July market at rather short notice, but these are tricky times as I'm sure you've all noticed. We are hoping to hold one on Saturday 15 August, so do get in touch if you want to be sure, or check on [Wanborough.info](http://Wanborough.info). We don't normally have an August market as it clashes with the show, especially the procession, but as there is no show, sadly, we might as well go ahead. Sue Birley 01793 790438 [sbirley@gn.apc.org](mailto:sbirley@gn.apc.org)

## News from The Old Boilers

The Old Boilers regret to announce that the 2020 Wanborough Community Beer Festival has now been postponed until the 23/24 April 2021. Although we were hopeful that we could still run the festival this year, the current restrictions on organised events will not allow us to run a financially viable festival. It is therefore our decision to postpone till April 2021 and hope that in the New Year there will be further relaxation the rules around social gatherings. If you have bought tickets they will still be valid for next year's event. If you require a refund please contact us by email at [theoldboilers@gmail.com](mailto:theoldboilers@gmail.com)



## Liddington 100 Club

I hope this message finds you all well and that you have kept safe during these difficult times. I will be sending out the membership forms for the next 12 months shortly and will be drawing for the April draw in the Village Inn, now that it is open within the next week. I have just donated the last £150 in the account to All Saints Church. A big Thankyou to you all. Caroline Tams

## Wanborough Playgroup

It was wonderful to welcome back children and parents to Playgroup on 22 June. Our one-way system worked well, and the children were happy to leave their parents at the cloakroom door. With careful planning of our resources we were able to give the children a wide range of activities without compromising safety and cleanliness. Each child had their own named pencil case, craft box and paper carrier which they loved delving into to find the tools and craft materials to create their master pieces. They also enjoyed doing "magic painting" too. We managed to be outside every day which they all enjoyed. The most popular items outdoors were the seesaws, slide, balancing beams, balls and the scooters. They also spent time playing hide and seek as well as being dinosaurs and tigers! The children enjoyed collecting daisies to make daisy chains and collages. They built structures and vehicles, played imaginary games with the small world toys, and played musical instruments and much more. At tidy up time the children liked to put the toys in our giant laundry bags so that they could be soaked and then watch them draining on the fence and then watched how quickly they dried on trays in the sun.

Unfortunately, we were unable to hold our annual Sports Day, but the children enjoyed making their own obstacle course with the outdoor toys provided. We also could not hold our "Leavers Ceremony". We hope that restrictions will be lifted so that we will be able to hold a reunion for our leavers in the Autumn. Planned visitors have had to be postponed until restrictions are lifted too!

We have been given new guidance that comes into force from 20 July and I'm sure that will be followed by more before we restart in September.

## Looking towards September

As long as the guidance stays as it is or is reduced in some way, we will be open Monday-Friday from 9.00am-1.00pm starting on Tuesday, 2 September

If you would like to register your child to start in September or any time after that please email: [wanboroughplaygroup@hotmail.co.uk](mailto:wanboroughplaygroup@hotmail.co.uk) or message us via our Facebook page @wanboroughpreschool.

**Sarah Ingram, Playgroup Supervisor**



## Wanborough Parish Council

Parish Council continue to hold all meetings virtually via Zoom. Residents are welcome to join, submit questions and listen to meetings. Please email the Parish Clerk for the meeting ID and password if you wish to join.

The next meeting is due to be held on Monday 24 August at 7.15pm.

### Wanborough Play Areas – Opened 4 July

We are pleased to confirm that following the announcement by Government, we have re-opened both play areas in Wanborough on the 4 July.

Our Handyman worked extremely hard to carry out his inspections to ensure the play areas are ready, bearing in mind that they could not be inspected since mid-March, which meant that there was a considerable amount of work that needed to be done in a short space of time. In addition to his inspections he also cleaned all equipment prior to opening.

Parish Council have carried out a full risk assessment and we ask parents, guardians and carers to ensure that all children follow these rules.

Please do:-

- Stay 2 metres apart where possible
- Use hand sanitiser before and after use
- Only one adult per family in the play area
- Wash your hands when you get home

Please don't:-

- Bring food or drink into the play area
- Enter if you or a family member have Covid-19 symptoms
- Touch your face, mouth or nose.



Please be patient and kind. If you see a child waiting to play on the equipment then please take it in turns so that everyone gets a chance to play.

Finally keep safe, take care and have an enjoyable time

### Wanborough Rock Dragon

For those who haven't spotted it yet, the dragon can be found on Green Lane, at the Kite Hill end of the path.

Spread a bit of joy. Decorate a rock and add it to the dragon's tail. Please do not touch or remove any rocks / pebbles. just add your own.

If you are out on your walk go and take a look, it has already grown to include around 75 decorated rocks since it was started.



## Village Maintenance

There was a large willow tree that fell across Green Lane and which was kindly cut back by Joe Smith (Parish Councillor) to allow access to continue. A considerable number of branches remain and these will be tidied up and cleared in due course.



The area at the bottom of Kite Hill was becoming very overgrown. We have cut back the main overhanging branches and tidied the area up to make it easier for those parking.

The Handyman has also been clearing shrubbery along a number of footpaths and pavements to keep these areas clear.

We carry out our own checks around the village to identify any maintenance that needs doing, however if there is anything that you feel needs urgent attention around the village, then please report any maintenance issues to the Parish Clerk by either e-mail [clerk@wanborough.info](mailto:clerk@wanborough.info), by using the "Maintenance Report" on the Parish website [www.wanborough.info](http://www.wanborough.info), or alternatively text, ring or WhatsApp on telephone number 07588 769829.

## Litter

The Handyman regularly litter-picks around the Parish's open spaces and does a great job of keeping these areas clean and tidy. We also have a number of residents who are registered with Parish Council as volunteer litter pickers and we are very grateful to all those who have collected rubbish around the village.

Parish Council also normally arrange and carry out group litter picks targeting certain areas in the village, however due to Covid-19 we have not been able to hold these yet this year. Hopefully we will be able to in the near future.

If you can spare a bit of time and would like to volunteer then please get in touch with the Parish Clerk. Parish Council provide all equipment (picker, hoop, gloves, bags, high viz jacket), we also arrange to collect the bags of rubbish you have collected.

We live in a lovely village, so let's do our bit to keep it clean and tidy by taking your rubbish home.



## Community Speed Watch

The volunteer-run scheme, which helps to identify speeding drivers to the Police has re-started after being put on hold due to Covid-19. The scheme re-started on Monday 6 July and at the time of writing two sessions had been carried out by our volunteers along The High Street. The session on Callas Hill identified that, although the total number of cars was down, a higher percentage were caught speeding. This information has been reported to the Police.

Please check the Parish website [www.wanborough.info](http://www.wanborough.info) for regular updates and information on the pandemic.

Parish Council can be contacted on 07588 769829 or email [clerk@wanborough.info](mailto:clerk@wanborough.info) - Please get in contact if you need help with anything.





## Planning Update

### Inlands Farm – Science Park – Planning Reference S/OUT/18/1943 – Revised plans

Swindon Borough Council have confirmed that, until they are able to agree a date when they can hold a Planning Committee meeting to discuss this application, SBC will continue to accept comments on this application, providing an extension until the end of August 2020.

Send your comments to:-

E-mail – [sbcdcs@swindon.gov.uk](mailto:sbcdcs@swindon.gov.uk)

By post: Mr Ed Snook  
Planning Department  
Swindon Borough Council  
Wat Tyler House  
Beckhampton Street  
Swindon  
SN1 2JG



Quoting reference **S/OUT/18/1943**

A number of residents have asked Parish Council if they can confirm how many objections SBC have received for this application so far.

Since the applicant submitted the revised plans, the following comments have been recorded on SBC's planning portal as at 14<sup>th</sup> July (this is just a summary, not a detailed report on the responses):-

#### Objections received from the following Consultees:-

North Wessex Downs AONB	Historic England	Wilts and Berks Canal Trust
Woodland Trust	SBC Conservation Officer	SBC Landscape Officer
CPRE Wilts	Environment Agency	Robert Buckland MP
Wanborough Parish Council	Covingham Parish Council	Liddington Parish Council
Bishopstone Parish Council	Shrivenham Parish Council	Bourton Parish Council

#### Holding objections / further assessment needed / condition comment from the following Consultees:

Highways England	SBC Contamination Officer	SBC Drainage Officer
Thames Water	Wilts Archaeology Officer	

#### Public Objections

Just over 500 public objections from residents have been received, including a number of detailed letters of objection from SSPG.

#### Public Support

In addition to all the above objections there are approximately 350 letters of support from employees of Wasdell. Three company suppliers have also supported the application.

Many thanks to all residents who have taken the time to submit their comments to SBC to date. All comments received can be viewed on SBC's website.



# Wanborough Traffic Calming Scheme Consultation



## Background

As part of the New Eastern Villages (NEV) a comprehensive access strategy has been developed to ensure that the surrounding area does not suffer from the effects of additional traffic. One such measure is a new link road, the Southern Connector Road (SCR), which will provide access to the new development from Commonhead and Pack Hill. In order to ensure there is not an increase in inappropriate through traffic in Wanborough and the surrounding villages the junctions on the SCR have been designed to prohibit movements that could be used as rat-runs. To further discourage through-traffic the council has secured grant funding to install traffic calming measures within the village itself. The purpose of this consultation is to present the initial designs for a traffic calming scheme within Wanborough and receive feedback from local people on the proposals.

## Proposals

The scheme aims to reduce speeds through use of traditional engineering solutions and psychological traffic calming whilst also respecting the distinct character of the village. To help develop the plans, a site meeting was held with Swindon Borough Council Officers, the Engineering Designer and Ward Councillor to identify local issues.

### Changes to the High Street include:

- realignment of the mini roundabout to reduce approach speed
- prominent narrowing gateway features with emphasis on the speed limit
- increased formal parking spaces and reduced informal parking locations
- additional formal pedestrian crossings
- priority buildouts to slow drivers and reduce traffic flows in both directions
- road narrowing through the High Street and the approach from Callas Hill.

### Changes to Pack Hill include:

- Introduction of a loop activated LED carriageway sign. This will inform vehicles travelling in the other direction that a larger vehicle is approaching, allowing sufficient time to stop and wait.

### Changes to Rotten Row include:

- Upgrade to existing pedestrian crossing to Hooper's field comprise, provision of hazard marker posts either side of the carriageway on both approaches to the crossing bringing it to the attention of motorists. In addition to this, SLOW road marking either side of the crossing will warn drivers to slow down.

## Future Improvements

It has been identified that the Redlands and Lotmead development will have an impact on Wanborough Road. As a result of this, additional traffic calming along Wanborough Road will be implemented as a condition of the Redlands and Lotmead consents.

## Consultation Timeline

Consultation will be carried out exclusively online for 6 weeks from **6<sup>th</sup> July to 17<sup>th</sup> August**.

## Scheme Delivery Timeline

Construction of the scheme is expected to commence towards the end of 2021 and will last approximately 15 weeks.

## Contact us

For further information please email the New Eastern Villages team at [WTC@swindon.gov.uk](mailto:WTC@swindon.gov.uk)

## Online Consultation

Please visit the online consultation page by following the link below for more information including frequently asked questions and to give your feedback.

**[www.swindon.gov.uk/wanboroughtrafficcalming](http://www.swindon.gov.uk/wanboroughtrafficcalming)**

## Meet the Chair of Wanborough Parish Council

I am pleased to write a small article on my history to introduce myself to those parishioners who are either new to the village or do not know me.

My memories of the village go back some 72 years. Once I was able to walk and talk, I was useful to my Grandfather and was allowed to run errands to the local pub. In those days, the landlord would serve a youngster like me with beer and tobacco to take back to my Grandfather and Uncles, who worked the smallholding that is now called Wanborough Herb Nursery.

The village has changed a lot since then. Once we were either Upper Wanborough or Lower Wanborough, with green fields separating the two, where The Beanlands and Magdalen Road estates are. Now Wanborough is considered to be a single village. Little did I know then that one day I would be privileged to become Chair of Wanborough Parish Council.

Whilst serving for 24 years in the Royal Navy, I left the village, except for infrequent visits back to see my Grandparents until 1983. Having been a Group Scout Leader with the 2nd Portchester Scout Group, on my return, I contacted the local Scout District Commissioner to see if there was a group nearby that my wife and I could join. The District Commissioner tasked us with resurrecting the 1st Wanborough Scout Group, which my wife and I then ran for over 20 years. Approaching what we thought was retirement age, we handed the group over to Tessa Lanstein's capable hands and she remains the current Group Scout Leader.

However, scouting wasn't done with us. The retirement age was abolished, and we continued to serve in scouting roles, as Assistant District Commissioners, until 2015. We still are members of the Scouting Active Support.

With my son, we run Wanborough Herb Nursery, which was established in 1991, after my son qualified from Merrist Wood Horticultural college with an NDH(NP). As I am now semi-retired the Nursery is not open to the public, but I can be found locally at Wanborough Farmers Market, where I am only too happy to discuss any issues that villagers may have.

I have now served over 12 years as a Parish Councillor and remain proud to be part of this village, especially as my colleagues saw fit to vote me to the Chair last year.

Why do I do it and what does the future hold for Wanborough and the Parish Council? During my time in Wanborough there have been significant changes as the village has grown and the pace of those changes increased. Over the years we have lost village organisations like the Good Companions and the Gardening Club, but the events of the past few months and the reaction of the volunteers, neighbours, friends and families to help those in need of help at this time has shown there is still a strong community spirit in Wanborough. Through these difficult times the community has pulled together, and I am aware that there is still a strong sense of identity in the village.

In addition to the devolvement of services from the Borough Council, the Parish Council now faces major challenges; the New Eastern Villages which will undoubtedly bring new challenges for the village from the increased traffic and greater demands on facilities; the school, surgery, etc. and the development of Hooper's Field which all users agree is in need of improvement.

We need to see organic growth within the village and to try and mitigate the incursions on our way of life being caused by the developments around us. The Parish Council is working hard to introduce the minor highways improvements suggested by residents, and traffic calming to counter the effects of greater traffic volumes from the new developments; I am a firm believer that there should be a better bus service in the village, perhaps that may be able to tap into the services to the new developments; a Working Party is working with the sports clubs to improve the facilities so they meet the needs of the clubs in the future and become self-sustaining. As these progress, we have yet to hear when the resources will be available to provide facilities for the administration and maintenance of an enlarged Parish.

I have in one capacity or another been pleased to serve this village for the last 36 years. I hope that I will continue to have a positive part to play in the development of the village in future years.

**Bob Biggs**



## Tennis Club update

As of last month, the tennis club has been reopened and we are delighted to say that many members are making use of courts 1, 2 and 3. We are hoping to resume club play, Rusty Racquets and even some group coaching very soon. Details of how to register interest in these will be available in the tennis newsletter that is issued to all club members.

### Open to Non-members

We are also introducing the ability for non-members to come and play through one of the following options:

- Guests may play with an existing member at a cost of £4 per person per session (up to 3 times before they have to join the club)
- Pay and Play is open to all non-members, so you can book a court at a cost of £15.00 per hour per court.

To book a court please contact Jane Flew on 01793 790332 or Melanie Brough on 01793 741277

### Safety

In order to keep our members safe, we would like to remind you that we continue to follow LTA guidelines which include observing the appropriate social distancing, keeping good hand hygiene and not sharing or touching other people's tennis balls. Advanced booking of a court by our members is also mandatory through the Clubspark website: <https://clubspark.lta.org.uk/WanboroughTennisClub>. All bookings must include the name of every player in order to facilitate the government's Track and Trace policy.

Unfortunately, the pavilion is not yet open, so there will be no access for the time being to the clubhouse or the toilets.

It remains to say that we always welcome new members to our lovely club, and we look forward to seeing people of all standards hit the courts as we transition out of lockdown!

## Wanborough Village Hall

The hall re-opened to Playgroup only on 22<sup>nd</sup> June. Playgroup were only allowed to re-open when they could prove to the Village Hall Committee and our Insurers that they were Covid compliant. Due to Government restrictions we have been unable to re-open the hall to the wider public.

The Village Hall Management Committee are working through re-opening guidance from the Government, our insurance company and ACRE (Action with Communities in Rural England). These documents are lengthy and change almost weekly. It will take some time to ensure the Hall is compliant and the volunteers who run the Committee are not personally liable for any Covid related issues. Updates on our opening will be posted on our noticeboard and on [wanborough.info](http://wanborough.info).

At the time of writing, we are still allowing vendors to park on the car park. We hope you are still finding these vendors a positive addition.

We hope that restrictions will continue to be lifted enough for the hall to be re-opened in some way so that our AGM to be held in September. We will update in next months magazine as well as putting up posters in the village and updating [wanborough.info](http://wanborough.info)

**Sarah Ingram, Secretary**

## Front Cover Picture

Thank you to Vinny Warner for this month's cover picture of a rainbow over Liddington Hill. That's what you call being in the right place at the right time!





## **Borough Councillor Update from Gary Sumner**

My Ward meetings are taking place again online (via Zoom) - please take a look at the news section of [www.ridgewayvillages.co.uk](http://www.ridgewayvillages.co.uk) for the meeting details etc.

The next one is 1 August 10-11am – hope to see you there and I'm hoping we may get back to physical meetings in September subject to the Village Hall.

### **INLANDS FARM (Swindon Science Park):**

It looks like we are finally getting to the end of the very lengthy planning application to the point at which this application is likely to be determined at a Special Planning Committee in late August. I will have to update via my website and on Social media as the next edition of the Lyden will be too late. I have steadfastly opposed this application and both Robert Buckland MP and I have submitted detailed objections.

Although the applicants have got their employees to countersign a photocopied pro-forma in support, the objections have been more individual and heartfelt and in far greater numbers.

If anyone you know hasn't commented, please ask them to do so now – comments will still be accepted up to the preparation of the Committee Report later in August. The AONB Planning Officer has come out with a strong objection on behalf of the nationally protected 'Area of Outstanding Natural Beauty'.

Inlands Farm comments can be submitted to [sbcdc@swindon.gov.uk](mailto:sbcdc@swindon.gov.uk) quoting the reference S/OUT/18/1943 for the attention of Ed Snook up to when the Planning Committee report is drafted:

### **Broadband – Gigabit Fibre Programme & BT Openreach:**

I have been working closely with BT Openreach to try to deliver genuine superfast fibre to homes in the village. This would be a completely new fibre network direct to homes. Openreach are in the final stages of modelling and we will have a definitive Wanborough 'offer' to share in the August issue of The Lyden and online. The Government funded (DCMS) voucher scheme means that we will have to contact every resident and business to pledge their voucher and they would have to commit to taking up a fibre service (although the costs are quite modest now) for 12 months. Some outlying areas may still be best served by the wireless 4G system which is currently overloaded. Both the Parish Council and I will need your help to promote this offer. The Bishopstone/Hinton & Chiseldon figures are still being modelled.

**Please call me on 790814 or email: [gary@ridgewayvillages.co.uk](mailto:gary@ridgewayvillages.co.uk)**

Get the latest Wanborough, Liddington, Bishopstone, Hinton Parva & Badbury news at: [www.ridgewayvillages.co.uk](http://www.ridgewayvillages.co.uk)



# M4 junction 15 Improvement Works

## Background

The improvements to M4 junction 15 have been identified by Highways England and Swindon Borough Council as critical infrastructure. This scheme is required for the delivery of planned strategic developments in the area, including the New Eastern Villages (NEV), which comprise residential and employment opportunities as well as local facilities such as retail and education provision.



## Funding

The scheme is funded by Swindon Borough Council, Highways England (Growth and Housing Fund), Swindon and Wiltshire Local Enterprise Partnership, Permission and Redrow (Badbury Park).

## Deliverables

### Works on A419 will include:

- A dedicated left turn lane on the southbound entry to the roundabout for London bound traffic
- Widening of the A419 southbound approach to the junction and the northbound exit from the junction

### Works on A346:

- Widening of northbound entry to the roundabout

### Works on Junction's slip road and lanes:

- Widening of the M4 eastbound off-slip road
- Widening of the junction's southern circulatory road

### Works on Day House Lane:

- proposed prohibition of vehicular access under the A419 bridge on Day House Lane and its conversion to a quiet route for pedestrians, cyclists and equestrian users.

## Delivery Timeline

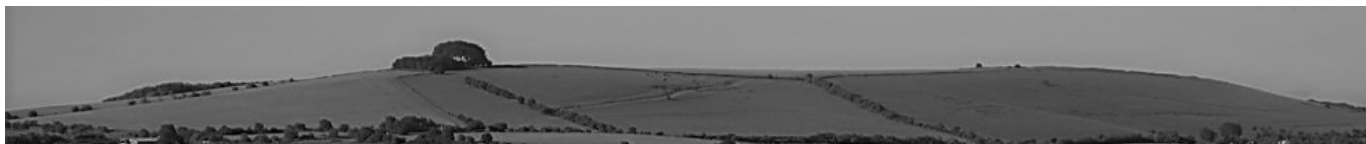
Enabling works have already commenced including establishment of a site depot and necessary vegetation clearance. Construction on the road network is programmed to commence on 10<sup>th</sup> August 2020 and the work will be completed in June 2021.

## Contact

Further information on the phasing of the work will be available from Swindon Borough Council and Highways England on 27<sup>th</sup> July 2021.

The Council's M4 Junction15 team can be contacted at: [M4jnc15@swindon.gov.uk](mailto:M4jnc15@swindon.gov.uk)

## Liddington Parish Council



### New Councillor

The Parish Council is pleased to welcome our new Councillor, Pippa Workman, who was co-opted at the June meeting. Pippa has lived in the village for a number of years and is keen to involve the younger residents. We wish her every success and look forward to her contributions in the future. This means that we are now back to a full complement of Parish Councillors.

### Share Your Surplus Event

A suggestion was made to the Parish Council by a resident to organise a share your surplus produce event. A preliminary date of 6 September has been set. Everyone is welcome to attend, not just the keen gardeners with an excess of fruit and vegetables that they have grown. Please watch for further details nearer the time. If anyone would like to register an interest, please contact Sarah Hill by email, [Sarah@liddington.org](mailto:Sarah@liddington.org) or telephone 07534 536071.

### Playing Field

The second bench has now been refurbished, thank you Cllr Clive Bunney for carrying out the work. The tables and some of the equipment needs rustproofing and painting, which, weather permitting, will be completed over the summer months.

A short meeting of Liddington Parish Council will be held virtually on 5 August 2020 starting at 7pm using Zoom, to progress some specific projects that are currently under discussion.

The next full Parish Council meeting will be held on Wednesday 2 September 2020 starting at 7pm.

If the current social distancing guidelines are still in place, which does not allow a face to face meeting, and any resident would like to ask a question, raise an issue or make a comment at the September meeting, please submit the details in writing to the Clerk, at [parishclerk@liddington.org](mailto:parishclerk@liddington.org) by Friday 28 August. All points will be answered in writing and in the meeting minutes.

Alternatively, if any resident would like to watch and listen please contact the Clerk for joining details. (Contact details page 26) **Val Curtis, Clerk to Liddington Parish Council**

### The Ridgeway Link to Close

Sadly, due to a number of reasons we have agreed that, after just over 24 years, it is no longer viable in terms of money or manpower to continue to run The Ridgeway Link.

We have not made this decision lightly but over recent years we have found it increasingly difficult, and more recently impossible, to recruit any new volunteers. Alongside this we now only have one or two people who use us often and perhaps another couple who use us sometimes. This not only means fewer donations but raises the question of whether we are still needed.

We have, also, not had any offers to become the co-ordinator.

Unfortunately, regardless of income, which is currently zero due to the lockdown, we have to pay for the telephone, two insurances and volunteer expenses.

We wish to thank anyone who has helped and/or supported us over past twenty-four years. It has been, and is, very much appreciated.

We wish everyone the very best for the future. **Brian Clarke, Louisa Barnes and Jan Chapple.**





**WANBOROUGH  
SHOW SOCIETY**

"For Community & Local Heritage"  
[www.wanboroughshow.org](http://www.wanboroughshow.org)

These are the entries for the 2020 Wanborough Show Programme Cover competition.

As you know, the show has been cancelled this year and we will not be producing a programme.

However, in recognition of all the your hard and imaginative work, we are displaying the entries here for everyone to enjoy.

My experience from working in schools and as an adult has shown me one thing: hang on to your creations, your school work, your reports and awards, one day you will look back at your childhood and say 'I designed that'.

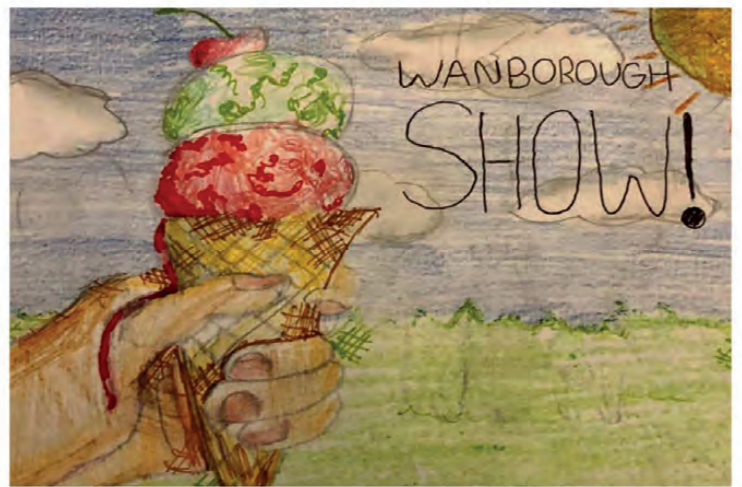
Thanks and please enter again in 2021.

*Martin and Kay*

*The theme for the cover  
this year was  
"Ice Cream"*



*Henry*



*Grace Sutton*



*Jules Haddrell*

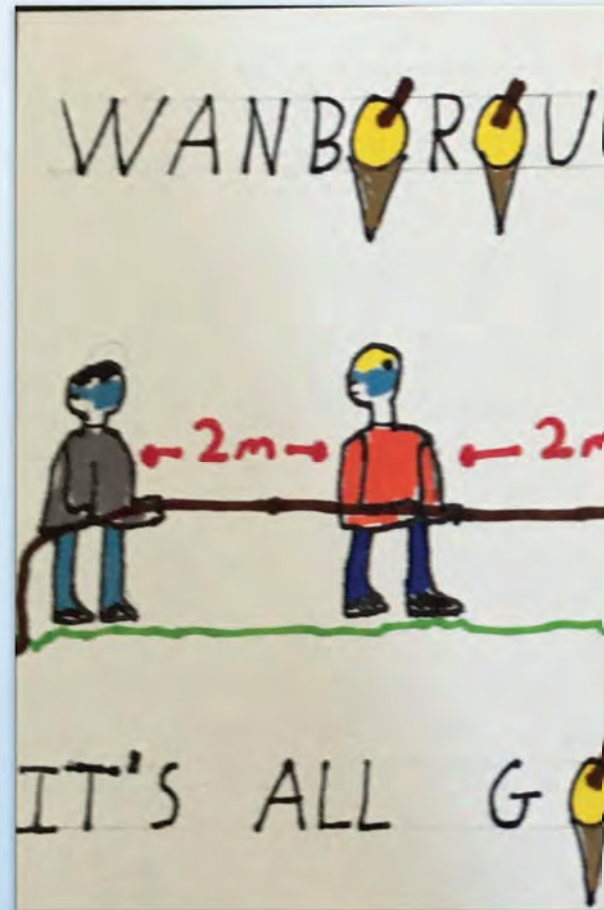




Charlie



Annabelle



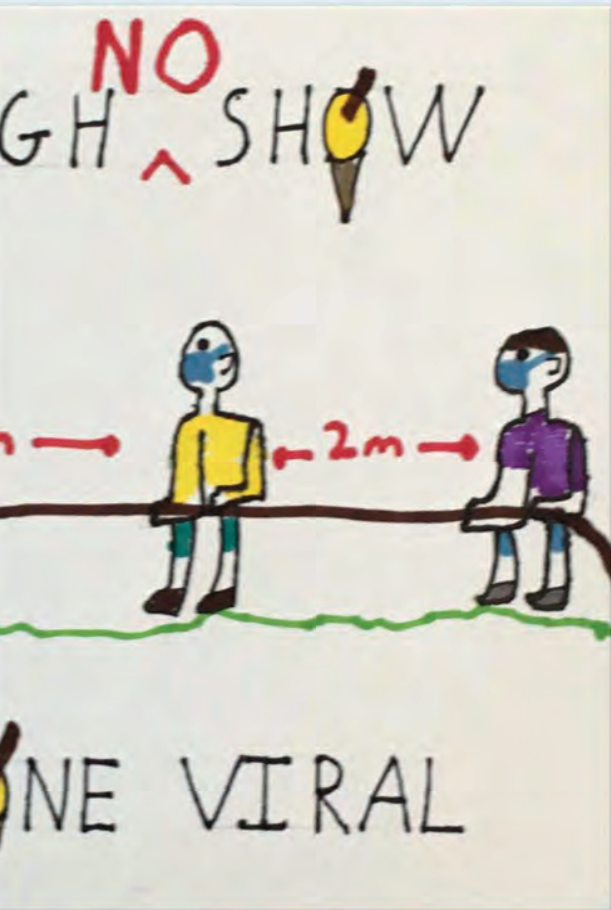
Oliver



Ella Pet



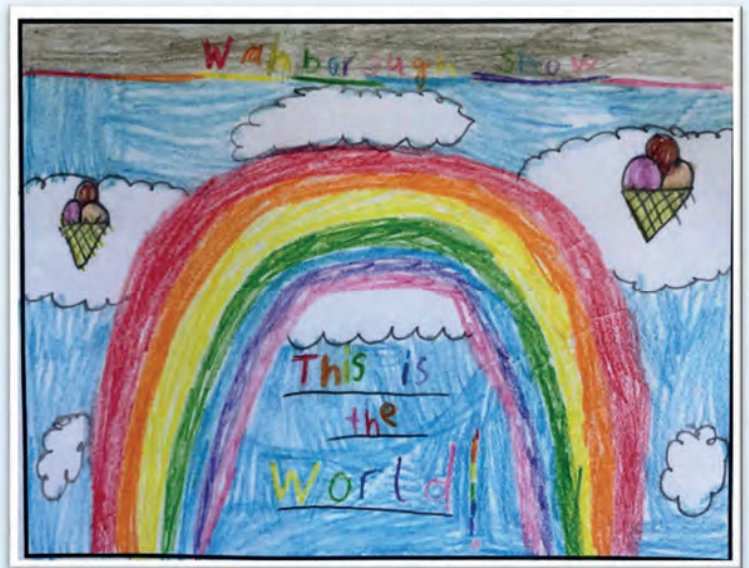
# WIMBOROUGH HOW SOCIETY



Oscar



erbridge



Amelia Dugdale



Erin Popowicz



Olivia





Jasmine Perry



Ollie



Lucy Mitchell



## Imogen

## NITROUS OXIDE CYLINDERS

There have been reports of small silver canisters like those shown right being found in the village. They are Nitrous Oxide cylinders, Nitrous Oxide is used as a recreational drug.

The ones you find are likely to be empty and harmless: they can be disposed of in the usual waste. They are considered as litter and will be picked up as part of regular clean ups by the Parish Council. However, if you are going to pick them up, please wear stout gloves and long sleeves or use a dust pan and brush. There may also be balloons around.



If you are not comfortable removing them, please report to the Parish Council who will arrange for them to be removed.



Nitrous Oxide is covered by the 2016 Psychoactive Substances Act, which means it's illegal to give away or sell. The Police are aware these cylinders are being found in the village and have suggested that you report them via 101 if you find any.

If you find a device like the one on the left, the owner/keeper may be using the drug.

If you are concerned about drugs, you can find more information on the government website [www.talktofrank.com](http://www.talktofrank.com)

# Sparkle & Shine

Established fully insured cleaners

Available for:

- Weekly, Fortnightly or Monthly cleans
- Seasonal Spring cleaning or
- End of Tenancy cleans

Please call or email to discuss your requirements & obtain a free quote

[sparkleyourhome@icloud.com](mailto:sparkleyourhome@icloud.com)

## 07935543158

## Meet Burt, our Corn Bunting

I have been walking regularly along the Hollow for over 2 years and throughout that time I have enjoyed the company of one bird in particular, a Corn Bunting. I see the male so often that he almost feels like a friend. We named him Burt this spring and have been following his adventures with great pleasure all through Lockdown.

All birds are protected and many of those living in the Parish are on the RSPB red or Amber list. Burt is on the RSPB Red list because Corn Buntings have declined greatly in north-west Europe. This is thought to be due to intensive agricultural practices depriving them of their food supply, weed seeds and insects, the latter especially vital when feeding the young. They have recently become extinct in Wales and Ireland, where they were previously common. In England, the government's environmental organisation "Natural England" offers grants to farmers to put towards implementing measures to conserve this species under the environmental stewardship scheme.

Corn Buntings prefer to reside in open country with trees, and are a permanent resident in the UK. Burt spends most of the spring and summer south of Ham Road, amongst the fields at the top of The Hollow, defending his mating rights. He has 2 regular perches, at the top of a Horse chestnut and a Hawthorn bush, both located next to our new protected verge signs.

However, you might also spot him on the wire fences and posts or in the tall grass and crops of the adjacent fields. He is a classic "Medium Brown Jobbie" so is well camouflaged. Throughout the Spring and Summer months it is rare not to hear his rattling call even if you can't see him.



**Burt**



**Burt's Brides**

Burt returned for the spring mating season with 3 females, Betty, Bella and Beth. As Corn Buntings are Polygynous, (the males mate with more than one female), it is highly likely he is mating with all of them. They settled in the field nearest PGL and will stay there until late summer. They then abandon their territorial rights and form larger flocks with other local Corn Buntings for added protection through the winter months. Corn Buntings normally nest on the ground amongst the field crops or in the field margins and Burt's mates are no different, we have seen him drop down amongst the crops to visit. The nests are made of grass, lined with hair or fine grass. The average clutch size is four, but commonly

varies from three to five, occasionally six. Males play only a small role in parental care for the chicks. They are not involved in nest building or incubation, and only feed the chicks when they are over half grown. This explains why Burt is always hanging around the trees singing and his group of wives are rarely spotted!

Our first spot of Burt's baby bunting fledglings occurred in early July. Information for this article was gathered from the RSPB website, RSPB handbook of British birds and Wikipedia.

**Anita Basevi**



**Burt Junior**

## A Life-Changing Lockdown

Along with what I imagine to be the rest of the nation, I entered lockdown without a great deal of focus and feeling nervous about what the future might look like.

I left my long-term corporate career back in January, I was full of hope for my new franchise business, running retreats and cookery schools for women going through the menopause. "Pause", as it turns out being the operative word! It became clear very quickly that gatherings of any size were off limits for the foreseeable future. So, I spent the early days cleaning the oven, shampooing the carpets, walking the dog, marvelling at how nature was thriving and revelling in the quietness of it all. I spent time cooking and even more sleeping – we'll come onto that later. I was basically trying to push my uncertain future to the back of my mind.



I think most of us probably thought the whole Covid-19 thing would blow over in a few weeks, but when it became apparent that we were in this for the long-haul, two things fell into place for me. 1. I need to get out there and earn some money. 2. I had some extra time to focus on developing my business. Don't ask me what I was thinking, but I applied to work in the Amazon warehouse in South Marston, I think I panicked a bit! At 52, it was hard, tiring and physically demanding work – I lasted 2 shifts! But, as it happens, this short experience turned into something life-changing. During the first 10 weeks of lockdown, I wrote a little blog on my Facebook page "Learnings from the Lockdown" and one of those blogs focussed on my experience at Amazon, as a result I was contacted by a friend to see if I'd be interested in helping clients with a 21 day intestinal re-set programme. I should say that I had also taken the time during lockdown to study for a Diploma in Diet and Nutrition – which I've just recently passed with a distinction, so this felt like a natural fit.

So, I threw myself into the training, part of which was to go through the programme myself. This involved 21 days of "clean" eating, this next bit may horrify some of you, but No Caffeine, No Refined Sugar, No Alcohol and No Processed Foods. I told you, horrifying!! Not so much as it turns out; after all it's just 21 days and that's all it takes to break a habit and form new ones.

Before, I was tired all the time, being a woman of a certain age I was suffering with menopause symptoms, my joints were achy, I was on meds for acid reflux (the Dr told me that this would be for life), my skin was in pretty bad shape and I had totally lost my get up and go!

I was sleeping A LOT – probably 8-10 hours a night and 2-3 hours in the afternoons. You might think "that sounds great", but I never felt refreshed. It turns out that it's quality and not quantity that is the key.

Fast forward to today and I'm full of vim and vigour, I'm sleeping a solid 7 hours a night and finally wake up feeling good, I no longer make that noise (you know the one) when I get up off the sofa, I don't take those meds any more, people keep telling me how well I look, my menopause symptoms are under control and I've lost some weight!

So, lockdown did me a huge favour, it gave me the time to study and create a new wellness business which I would not have started if life had continued as normal. If anyone would like to hear more, I'd be more than happy to talk and explain further. Oh, and Menopause Retreats and Menopause Chef Cookery Schools will be back in January!

Trudi Wagner – [trudi@menopauseexperts.org](mailto:trudi@menopauseexperts.org), 07771 236165. Or join my Facebook Group – Trudi's Wellness Hub.

## The Joke Box

A little light humour for those lockdown blues - don't groan too loud!

1. Bars of soap are traditionally manufactured 10cm x 7cm in size (4" x 3" if you're using Imperial Leather).
2. Scientists have discovered that trees have their own advanced communication system.....it's called 'What Sap'.
3. The Tower of Pisa is the most famous listed building.
4. Scientists say it's possible to live on Mars. I know that's nonsense. I tried it once, I put on 5 stone and became diabetic.
5. The Hollywood actor Yul Brynner was a lifelong Liverpool FC fan, and despite having a completely smooth head he never used aftershave.....Yul never wore cologne!





# HERITAGE TREE CARE

Professional Tree Surgeons

**Comprehensive Service  
Qualified Staff  
Fully Insured**

- ✓ Pruning and Shaping
- ✓ Felling and Removal
- ✓ Hedge Cutting
- ✓ Stump Grinding
- ✓ Tree Planting

Free quotations and advice  
Call Ian Walding (N.C.Hort / N.D. Arb)

**01793 790210**

email: [ian@heritage-treecare.co.uk](mailto:ian@heritage-treecare.co.uk)

[www.heritage-treecare.co.uk](http://www.heritage-treecare.co.uk)



**Sugarcraft  
and  
Cake  
Decorating  
Supplies**

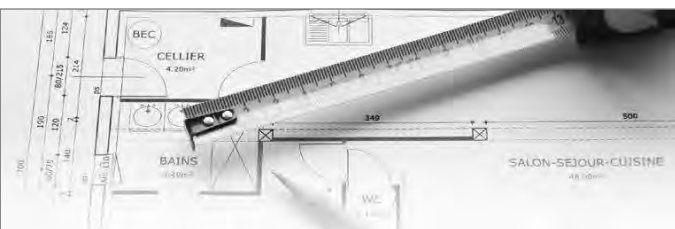
1 Hilliers Yard, Marlborough SN8 1BE  
01672 288080

## **Write Learn Tutoring** English Tuition

Heather Hawkins  
Dip Classical Studies, BA, MA, MTA

- Enthusiastic, dedicated one to one English tuition
- KS1 - Undergraduate
- SEN welcome
- Individually planned lessons
- DBS enhanced checked
- Competitive rates

Tel: 07876763795 email: [heatherhawkins@btinternet.com](mailto:heatherhawkins@btinternet.com)



# ROB SPURR

## Planning & Design Consultant

Architectural plans drawn for extensions,  
conversions and internal remodelling.

I deal with all aspects of planning applications  
and building regulations, Listed Buildings and  
Conservation Area consents.

3D bathroom designs and specifications.

Rob Spurr trading as Sun Design & Consultancy Ltd

Southview, 22 Ham Road, Wanborough

Email: [robspurr@btconnect.com](mailto:robspurr@btconnect.com)

Tel: 01793 790381

Mob: 07786 933460

## **QUALIFIED DRUM TEACHER WANBOROUGH**



**COMPETITIVE PRICES!  
SPECIAL OFFERS!  
ALL STYLES AND GENRES!**

**FOR MORE INFO  
PLEASE  
CONTACT:**



AIDAN O'NEILL - CRUNCH ENTERTAINMENT  
[info.crunchentertainment@gmail.com](mailto:info.crunchentertainment@gmail.com)  
07760452222

# Do you suffer from Macular Degeneration?



Typical symptom of Macular Degeneration

Same view using a specialist lens

We use a unique lens technology, to help those suffering from Macular Degeneration by:

- Increasing the Magnification - giving a larger, clearer image
- Incorporating Prism - to focus the light on a healthier part of the eye
- Special Filters - to enhance contrast and reduce glare, giving more comfortable vision



**VISIONVISIT**  
mobile opticians

Fully qualified Optometrist

Call us or visit website for further details



*"I can see faces again! Everything is so prominent and the colours stand out much more"*  
Mrs Bracegirdle, Chiseldon.

[www.visionvisit.co.uk](http://www.visionvisit.co.uk) **01793 232 588**

## mark jerome

painter & decorator

All types of interior and exterior decorating  
using the latest in dust free technology

Transform your solid wood kitchen with paint  
using the best hardwearing paint finishes  
available

"Thanks for a fantastic job!"  
Debbie Moxon, Baydon Post Office

**01793 790307**

High St, Wanborough

## James's Landscaping and Gardening Services



\*Grass Cutting \*Hedge Trimming  
\*Small Trees \*Garden Maintenance  
\*Clearances

Hard Landscaping-  
Various Including \*Fencing  
\*Gates \*Paths \*Paving \*Sheds

Locally based in Wanborough.  
For quotations, bookings or  
information- please telephone  
James Robb 07863 599991

## M J SMITH PLASTERING SERVICES

CHURCH ROAD WANBOROUGH

- FRESHEN UP OLD WALLS AND CEILINGS FOR DECORATION
- RE-PLASTER DATED ARTEX AND CEILINGS.
- EXTERNAL RENDER AND FLOOR SCREEDING
- INSURANCE WORK UNDERTAKEN
- ALL WORKS GUARANTEED

**25 years experience**

**01793 791042**

**07764 968525**

[Marlonsmith@sky.com](mailto:Marlonsmith@sky.com)

## HB'S BEAUTY

Hannah Thoburn  
BEAUTICIAN

Call: 07789 005121

[Hannah\\_thoburn@icloud.com](mailto:Hannah_thoburn@icloud.com)  
The Verne, The Marsh, Wanborough, SN4 0AR

# Woodfix

Kitchens, bathrooms and carpentry

Quality Kitchens & Bathrooms  
supplied and fitted

Bespoke Built-In Cupboards,  
Shelving and Worktops

All types of Flooring,  
Replacement Doors & Loft Ladders

**01793 790752**

woodfix@btinternet.com

**www.woodfix.co.uk**

A local family run business  
20 years experience  
Expert advice & design and  
Project management  
**CALL US FOR A FREE QUOTE**



**Hooper's Field Hall, Wanborough**

**Tuesday 9.30-10.15am**

**Zumba Gold** classes are low impact to suit the needs of the active older participant as well as those just starting their journey to a fit and healthy lifestyle.

No dance experience needed! Just wear comfy clothes, suitable shoes and bring a bottle of water.

Come and join this friendly, welcoming class.

**Cost £5 a class**

Contact Lorna Mackay for details:

Tel: 07582 612778 Email: lornaszumba@hotmail.co.uk

## Pilates Classes

**Millbrook Primary School, Freshbrook**  
Monday 6 - 7pm

**Hooper's Field Pavilion, Wanborough**  
Tuesday 6.30 - 7.30pm

**St Paul's Church Centre, Covingham**  
Thursday 6.30 - 7.30pm & 7.40 - 8.40pm

**Christ Church Community Centre, Old Town**  
Friday 2 - 3pm

Interested? Contact Sonia Jones on  
☎ 01793 791386

✉ pilates@sonia-jones.com

🌐 www.sonia-jones.com

*Please visit my website for other venues and services*

## PC Doctor Dan

**115 High Street, Cricklade**

Tel: 01793 759192 Mob: 07890 377517

### Home & Business Computing

- ✓ Free pick-up and drop-off service
- ✓ Purchasing advice, setup and installation
- ✓ Secure wireless and home networking
- ✓ Share files, photos, music and printers
- ✓ Virus and spyware detection and removal
- ✓ Training to meet your specific needs
- ✓ Hardware/ software repairs and upgrades
- ✓ Improve PC performance and reliability
- ✓ Create backups to protect key information
- ✓ Consultancy and managed service options

20 years IT experience @Intel Corporation

**www.pcdactor-dan.co.uk**



# Barrett

## Accounting and Tax Services

Chartered Accountants  
♦  
Chartered Tax Advisers



LIMITED COMPANIES,  
UNINCORPORATED  
BUSINESSES AND  
INDIVIDUALS

ACCOUNTS  
BOOK-KEEPING  
TAX RETURNS  
PAYE ♦ PAYROLL  
VAT ♦ TAX ADVICE

If you want service that gives  
value for money, whilst being  
professional and efficient,  
contact us on

01793 741250 or  
mail@barrett-ats.co.uk



## Yoga Classes for all abilities

Wanborough Village Hall

Tuesdays 7.45—9.15pm

Contact Nicki Clinch 07866957234

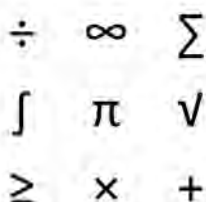
Email: nicki\_clinch@hotmail.com

web: <http://swindon-yoga.co.uk>

Pregnancy, Post natal yoga and baby massage

## Maths Tuition GCSE & A Level

- Qualified Maths Teacher
- GCSE exam marker
- Over 20 years teaching experience
- 1:1 lessons
- Revision lessons
- Flexible hours
- Based in Wanborough



Helen James BSc(Hons) PGCE MA

Email: [helenmjames11@gmail.com](mailto:helenmjames11@gmail.com) Tel: 07776 309633

[www.helenjamesmaths.co.uk](http://www.helenjamesmaths.co.uk)

## RABBIT HILL PROOFREADING

Maria Hawkins LLB

Society for Editors & Proofreaders Entry Level Member

*Providing a professional finish to your document*

- Work undertaken on any kind of document on paper or electronically
- Checking for all errors in grammar, spelling, layout and presentation
- Competitive rates

Tel: 07592 392214

Email: [mariahawkins@btinternet.com](mailto:mariahawkins@btinternet.com)



Professional vehicle valeting and detailing

### • SERVICES •

- Full Valet
- Protection Detail
- Winter Protection Detail
- New Car Preparation
- Enhancement Detail
- Paint Correction Detail
- Tailor Made 'In Depth Detail'
- Specialists in Ceramic Coating application

• Newly added for the winter months is our Winter Protection Detail.  
For more information on prices and what is involved in our services, please do not  
hesitate to email or call us!

All of our services can be tailor made to suit your wants and needs.



ADAM COTTAM  
[indepthdetailing@outlook.com](mailto:indepthdetailing@outlook.com)  
07794 979 353



## Video Photography Audio Cine

### Video Transfers

VHS - Camera Tape / Cards - DVD

### Cine Film Conversions

Standard/Super 8 - 16mm

### Slide Negative Scanning

35mm - 120 format - slideshow creation

### Audio Conversions

Cassette Tape - Open Reel - Mini Disc - CD

### Event Filming - Creative Editing

Web Video Films - DVD Production

Providing professional services  
in Wanborough since 1998

Tel: 01793 790842

[ian@takeonestudio.co.uk](mailto:ian@takeonestudio.co.uk)

Visit our showroom at  
14 Lotmead Business Village, Wanborough

## CHRISTOPHER LAWRENCE DESIGNS

**Quality Craftsmanship &  
Expert, Innovative Design**



We design, sell and install kitchens  
manufactured in Great Britain and  
have three innovative showrooms

*We also supply a wide range of small and  
large appliances, cabinets, doors, handles,  
lighting, plinths, worktops, taps, flooring,  
radiators, splashbacks, pop-up and USB  
sockets, as well as wet room and bathroom  
fixtures and fittings. We sell direct and can  
supply/deliver only or supply and install  
any of the above products.*



Best of Houzz Awards 2018 & 2019 for  
Highest Levels of Customer Satisfaction.  
Read more reviews: <https://bit.ly/2srnlyO>

Office: 01793 790108 Mobile: 07930 699500  
[info@chrisltdesigns.co.uk](mailto:info@chrisltdesigns.co.uk) [www.chrisltdesigns.co.uk](http://www.chrisltdesigns.co.uk)



## Cat Care & Services

If you need help caring for your pet or are away from home and don't  
want the stress of the cattery 'Cat Care & Services' will meet your and  
your pet's needs

**Our Visits will include:**

- Lots of socialising, play
- Lap time and attention for your pet
- Swindon and surrounding areas
- £10 per visit, (visits are 1 hour)



Cat Care & Services



Helen Spring: 0777 0767 916

## BAYDON MOWERS

*Garden Machinery Specialists*

- New Machines
- Servicing & Repairs
- Collection & Delivery for ride-ons
- Spare Parts
- Welding & Brewing gases

Mon - Thurs 9am - 5.30pm

Fri 9am - 5pm

Saturday 9am - 1pm

Unit 1 Skylarks | Bytham Road  
Ogbourne St George | Marlborough  
Wiltshire SN8 1TD

**WE HAVE  
MOVED!**

**01672  
841207**

richard  
james

**incentivised.com**

Local Agents with Local Knowledge  
Our people make the difference...

"Living in Wanborough puts me in a unique  
position when it comes to selling the benefits  
of the parish  
to any potential buyers. I have worked in the  
local area for over 16 years and specialise  
in the sale of village and country homes  
between Swindon, Marlborough and Devizes."

Ross Sutton  
Director



Contact your local agent today on  
01793 814542 or 07889 366130  
[ross@richardjames.info](mailto:ross@richardjames.info)

# Personal Announcements

## New Babies



Welcome to Henry Sheppard, born on 27 June 2020. Son to Emma and Jordan Sheppard, grandson to Tracy and Vinny Warner.

Welcome to the world you gorgeous little boy, love from Nana & Gramps xx

## Our dearly departed

Freda Elsie Palmer Funeral followed by Burial at St Andrew's Church Wanborough on 14 July at 1pm

*If you are having a celebration, want to send a message of thanks or remember someone dear to you, let us know and we will add your message here. Send messages to [Lydenannounce@gmail.com](mailto:Lydenannounce@gmail.com)*

## From Shipwrecks to Reefs Make a Dive to Malta

The warm crystal clear waters of Malta and Gozo are teeming with fish and the perfect destination to scuba dive. I have in the past few days contacted a couple of Dive Centres to check that they are open and taking bookings. All working in Mellieha as normal though not as busy as they would like to be.

With Covid19 deaths at just 10 Malta is doing all it can to encourage visitors. Two people who support my business through Mid Counties Coop are being taken to Malta on a three day trip in conjunction with the Malta Tourist Board to help showcase how all is operational and what steps are in place to make visits safe.

With so much history there is plenty to do along with some great diving if that takes your fancy, even if it is just for a short break.

I'm here to help so please do contact me if you have a holiday in mind.

**Tel 01793 791238 email [judi.moore@thepersonaltravelagents.co.uk](mailto:judi.moore@thepersonaltravelagents.co.uk)**



## St. Andrew's Church Wanborough

The Church is currently closed for normal services, we will resume printing cleaning details and Sidespersons' roster etc when it reopens.



*There are Books of Remembrance in All Saints', Liddington and St. Andrew's, Wanborough. If anyone wishes to have a name recorded there, please contact a Churchwarden.*

Please be aware that advertisers book annually, and the ads in this issue are their standard artwork - many advertisers will either be shut or working in a limited manner. I am sure local businesses will not mind you calling to check if they are able to help you at the current time, and if they can, will appreciate the business.

**Copy date for the Lyden is 14th of the month prior to publication**

### Privacy Statement

1.The Lyden Magazine needs to keep a small amount of personal data about its subscribers to enable the correct delivery and renewal of subscriptions. 2.We will collect, store, use, amend, share, destroy or delete personal data only in ways which protect people's privacy and comply with the General Data Protection Regulation (GDPR) and other relevant legislation. 3. We will only collect the following information: Name and Address for delivery 4. We will provide individuals with details of the data we have about them or amend or delete when requested by the relevant individual.4 We will keep all personal data secure. 5.We will not share any personal data with third parties or individuals outside of the Lyden distribution team.

## Wanborough Playgroup

### Village Pre-School

- Early Years Foundation Stage Curriculum delivered by friendly and qualified staff in a stimulating environment in a large hall with good sized secure garden.
  - Registered with Ofsted to take children from 2 years old
- Registered to receive Universal 15 hour and Extended 15 hours funding
  - Playgroup hours: Monday-Friday 9.00-13.00, Optional 08.45 start

**ALL SESSIONS ARE TERM TIME ONLY AND SUBJECT TO AVAILABILITY**

Village Hall, High Street, Wanborough, SN4 0AD Telephone: 07444 352687  
e-mail: wanboroughplaygroup@hotmail.co.uk

Website: [www.wanboroughplaygroup.org.uk](http://www.wanboroughplaygroup.org.uk) Facebook: @wanboroughpreschool



Registered Ofsted Number

109096

Registered Charity Number:

1026150





## CONTACT DETAILS FOR LOCAL ORGANISATIONS

### BENEFICE

#### Vicar

Rev. Bill O'Connell T:791359 E:villagevicar@hotmail.co.uk

#### Captain of Wanborough and Liddington Bellringers

Tony Pullan T :790904

Practice 1st, 3rd and 5th Fridays Wanborough, 2nd and 4th Fridays Liddington

#### Liddington 100 Club

Caroline Tams T: 07876 714950 E: ctams1@icloud.com

#### St Andrew's Flower Club

Chair: Kay Cullimore Tel 790458

Treasurer: Jackie Midwinter Tel 950852

Secretary: Alison Carse 790858

### WANBOROUGH PARISH COUNCIL

**Chairman:** Bob Biggs, Wanborough Herb Nursery, Tel: 01793 790327

E: cllrbiggs@wanborough.info

**Vice Chairman:** Roger Whitfield, 2 Manor Orchard, 791820

E: cllrwhitfield@wanborough.info

**Clerk: Angela Raymond,** Tel: 07588 769829

E: clerk@wanborough.info

### LIDDINGTON PARISH COUNCIL

**Chairman:** David Lomax, 38 Purley Road, Liddington. Telephone 01793 790440 / 07931 895044

**Vice Chairman:** Adrian Moore, Medbourne House, Medbourne Lane, Liddington. Telephone 01793 790391

**Clerk:** Val Curtis, 4 Mallard Close, Swindon, SN3 5JQ, T: 01793 530818

M: 07989 647438 E: parishclerk@liddington.org

### BOROUGH COUNCILLOR

Gary Sumner, Blenheim, Kite Hill, Wanborough, SN4 0AW

T:790814 E:gary@ridgewayvillages.co.uk

### WANBOROUGH PRIMARY SCHOOL

**Headteacher:** Andrew Drury, Tel: 790269

**Clerk to the Governing Body:** Lana Tilley Tel: 790269

**PTA : Chair:** Guy Simmonds c/o Wanborough Primary School,

E: contactpta@wanboroughprimary.org

www.wanboroughprimary.org

### BEAVERS/CUBS/SCOUTS

**Group Scout Leader:** Tessa Lanstein, Tel: 07795 057420

(Waiting lists are in operation so please make early contact)

Boys and Girls aged 6-8 / 8-10½ / 10½ -14 meet weekly in term time.

### WANBOROUGH VETS CYCLING

**Secretary:** David Halfhead, Tel: 790852

### WANBOROUGH JUNIOR FOOTBALL CLUB (The Wasps)

**Secretary:** Matthew Strickland T: 07754 978487

E:secretary@wanboroughwasps.com

Details of Team Managers U7(Year2) to U18(Year 13) at

www.wanboroughwasps.com

### WANBOROUGH HANDBELL RINGERS

Nicky Pullan, 2, The Beanlands, Wanborough. Tel: 790904

### WANBOROUGH SHOW SOCIETY

**Chair:** John Basevi M:07843 510 328

**Show Secretary:** Mike Thompson M: 07768 558799

info@wanboroughshow.org

### WANBOROUGH CRICKET CLUB

**Hon. Sec. :** Andy Thompson, Tel: 01793 852623

### WANBOROUGH TENNIS CLUB

**Hon. Sec.** Melanie Brough 741277 melaniebrough2@gmail.com

**Membership Sec.** Anica Alvarez Nishio -

wanboroughmembers@gmail.com

### WANBOROUGH BOWLS CLUB

**Hon Sec.** Mags Sanders Tel. 01793 614861

info@wanboroughbowlsclub.org.uk

### WANBOROUGH BEER FESTIVAL/THE OLD BOILERS

**Secretary:** Barry Hillier 07443 490019

wanboroughbeerfestival@gmail.com/theoldboilers@gmail.com

### WANBOROUGH VILLAGE HALL

**Lettings Secretary:** Karen Hawkins 07823 490153

E:vvhlettings@gmail.com Hall calendar on Wanborough.info

**Chairperson:** Dion Dean 07841 866773

**Secretary:** Sarah Ingram 07530 451549

### WANBOROUGH PLAYGROUP (Village pre-School)

**Supervisor:** Sarah Ingram, Tel: 07444 352687 (during Playgroup hours)

**Chair of the Committee:** Kayleigh Bizley 07818 432657

wanboroughplaygroup.org.uk

wanboroughplaygroup@hotmail.co.uk

### WANBOROUGH PARENT AND TODDLER GROUP

Enquiries: Alicia Batty, Tel: 07895539287

e-mail: mr-mrspabatty@hotmail.com

(Wednesdays 1.10 – 2.45pm (during school term), at Wanborough Village Hall)

### WANBOROUGH THEATRE CLUB

**Hon. Sec.:** Mrs. D. Rawlings, Tel: 01793 979170

### BISHOPSTONE AND HINTON PARVA WI

**Secretary:** Sue Reade. Tel: 710208

E: sue\_reade@btinternet.com

### BRIDGE CLUB

Jim & Joy Ball, Tel: 790293. (Friday evenings at Hinton Parva Village Hall)

### LIDDINGTON SCOTTISH DANCING GROUP

Linda Clarke. Tel: 790158

Thursday evenings 7.45 – 10pm (September – May at Liddington Village Hall)

### LIDDINGTON VILLAGE HALL

**Hon. Sec.:** Alison Babbington, 10 The Street, Liddington SN4 0HD

**Chairman:** Mr. Matthew Bowman, Meadowbank House, Medbourne Lane, Liddington SN4 0EY Tel: 791401

matthewbowman56@gmail.com

**Hon. Lettings Sec.:** Sarah Hill, Church Rd, Liddington Tel: 790104.

sarah@jonhill.co.uk

## LOCAL WEBSITES:

For further information and news from our four villages, visit: [www.liddington.org](http://www.liddington.org) or [www.wanborough.info](http://www.wanborough.info)

For Bishopstone and Hinton Parva visit [www.villagenewsletter.org](http://www.villagenewsletter.org)

## LYDEN MAGAZINE CONTACTS

Editorial/Advertising: Andrea Jerome Tel: 790307

lydenmagazine@gmail.com

Subscriptions: lydensubs@gmail.com

Announcements: lydenannounce@gmail.com



## Beacon Developments

RELIABILITY - QUALITY - VALUE



specialists in home transformations

- new builds
- extensions
- loft conversions
- listed buildings
- kitchens
- bathrooms
- design & planning
- project management

E: [info@beacondevelop.co.uk](mailto:info@beacondevelop.co.uk) T: **01793 790245** W: [www.beacondevelop.co.uk](http://www.beacondevelop.co.uk)



Est.  
**1986**

Specialists in village property  
for over 30 years.

Contact us now for your  
free valuation.

01793 618080  
[sales@chappells.uk.com](mailto:sales@chappells.uk.com)  
[lettings@chappells.uk.com](mailto:lettings@chappells.uk.com)

Advertise here for  
**£80 per year**  
[lydenmagazine@gmail.com](mailto:lydenmagazine@gmail.com)

## PAUL BISHOP

Interior and Exterior Painter and Decorator  
Free Estimates  
Competitive prices

**8 SPINNEY CLOSE, LIDDINGTON**  
Call Paul on 790768 / mobile 07770 751275

**Chappells**  
ESTATE AGENTS

Your Village specialist when it comes to selling or renting. Free valuations and market advice.

**01793 618080**

[colin@chappells.uk.com](mailto:colin@chappells.uk.com) / [phil@chappells.com](mailto:phil@chappells.com)  
[www.chappells.uk.com](http://www.chappells.uk.com)

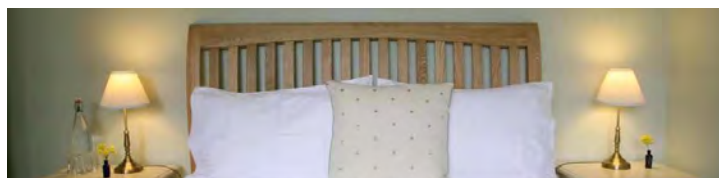
## JUDI MOORE

**YOUR WANBOROUGH BASED  
TRAVEL AGENT**

FULLY ABTA & ATOL REGISTERED

Call 01793 791238 or email me

[judi.moore@thepersonaltravelagents.co.uk](mailto:judi.moore@thepersonaltravelagents.co.uk)



## Meadowbank House

Traditional Bed and Breakfast

Restful and luxurious accommodation in Liddington

01793 791401 [www.meadowbankhouse.com](http://www.meadowbankhouse.com)

## A & B Domestic Appliances

Guaranteed repairs to washing machines and tumble driers. A genuine professional repair service.

Contact Andrew Matthews at:

E: [aandbdomestic@gmail.com](mailto:aandbdomestic@gmail.com)

Tel: 01793 536332 Mobile: 07850 665925

11 Farman Close, Eldene, Swindon, SN3 6DP

## The HAIR and TRICHOLOGY Clinic

Treatment of Hair and Scalp Conditions  
NHS & Private Wig Service 01793 741136

**Bellissima Unisex Hair Salon Ltd**

Established 25 years

7 High Street, Chiseldon SN4 0NQ

01793 740147

[www.hairandtrichology.co.uk](http://www.hairandtrichology.co.uk)

## Mowerfixer

maintenance/repair service mowers,  
hedgecutters trimmers etc. for the Ridgeway villages  
New & 2<sup>nd</sup> hand garden machinery for sale

Doug Stevens

0789 979 1833 [doug@mowerfixer.co.uk](mailto:doug@mowerfixer.co.uk)

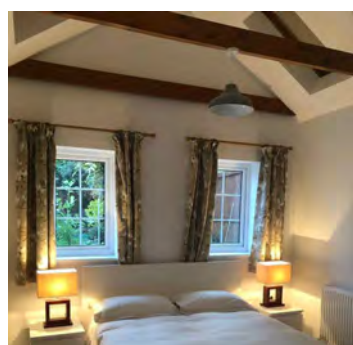
## Out of the Box Catering

[www.outoftheboxcatering.net](http://www.outoftheboxcatering.net)

Email: [info@outoftheboxcatering.net](mailto:info@outoftheboxcatering.net)



Event Catering for Corporate and Private Functions



## The Old Post Office

Beautifully converted  
one bed accommodation.

Available for  
short term rent.

Wanborough, Wiltshire  
07903 210505

Advertise here for

**£80 per year**

[lydenmagazine@gmail.com](mailto:lydenmagazine@gmail.com)